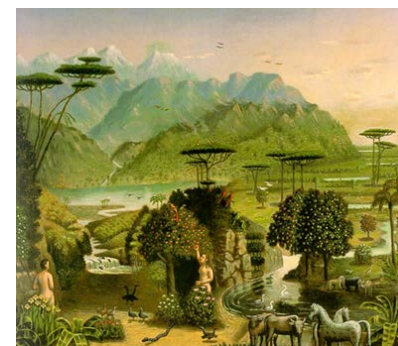


# Studying Climate Change and Culture at King's London



**MA CLIMATE CHANGE:  
HISTORY, CULTURE, SOCIETY**

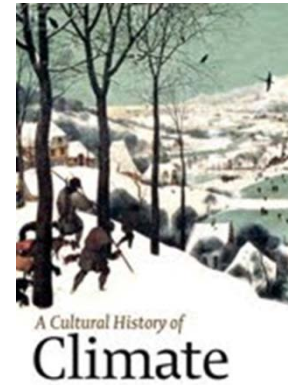
**DEPARTMENT OF GEOGRAPHY**

**STARTING 2015/6**

This new MA, led by Professor Mike Hulme and the Department of Geography at King's London, is designed to **prepare students for careers** working in the many public and private sector organisations which deal with the human causes and consequences of climate change. The Master's Programme:

- is suited for students with **either a science or humanities background** who wish to develop their understanding of how climate change is historically and culturally situated;
- **cultivates transferable skills** suitable for cultural institutions, governmental bodies, NGOs and environmental consultancies;
- develops the necessary knowledge and **research skills for students who wish to undertake PhD** research on the human dimensions of climate change.

[www.kcl.ac.uk/geography/study/masters/cchcs](http://www.kcl.ac.uk/geography/study/masters/cchcs)



## What you will study ...



### Core and Compulsory Modules:

Research Dissertation  
Climate Science and History  
Climate Change and Culture  
Practising Social Research

### Optional modules (three to be chosen):

Environmental Science and Policymaking  
The Environment and Cultural Change  
Environmental Internship  
Community, Vulnerability and Disaster Risk  
Disasters and Development  
Development and Environmentalism in the 'South'  
Environmental Actors and Politics  
Global Environmental Change 1: Climate Science  
Globalisation and the Environment  
Risk Communication  
Water Resources and Water Policy  
.... and many others available

### **Admissions**

Minimum admissions requirement is a 2:1 undergraduate degree (or international equivalent, for example GPA of 3.3 from a US university). Candidates who do not achieve a 2:1, but have professional or voluntary experience, will also be considered. Mature candidates will be considered favourably and part-time study is possible.

### **Further Information**

Our website provides more information about this MA. If you have any questions about studying climate change, history and culture at King's, please contact Professor Mike Hulme or Dr George Adamson.

- [mike.hulme@kcl.ac.uk](mailto:mike.hulme@kcl.ac.uk)
- [george.adamson@kcl.ac.uk](mailto:george.adamson@kcl.ac.uk)